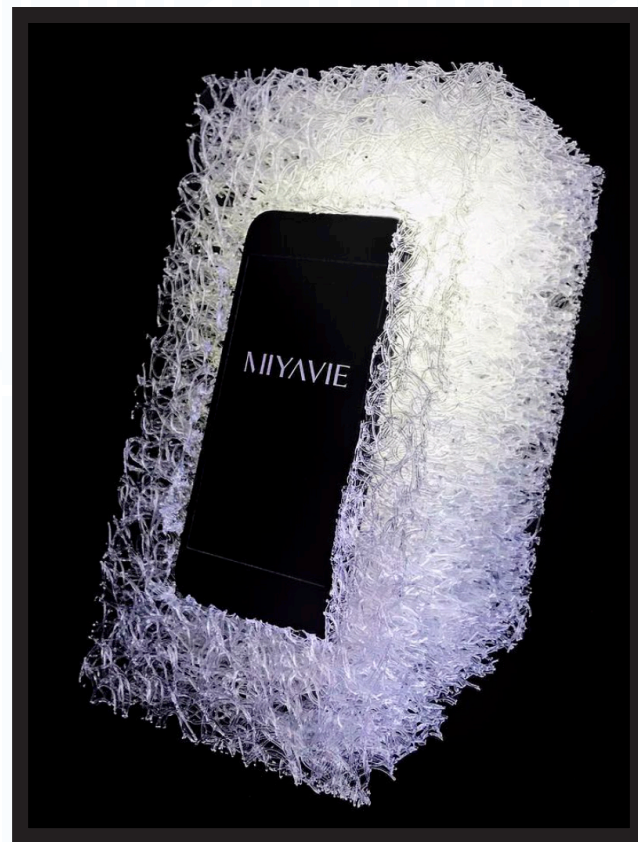


**Tycho Koll**  
**koll@usc.edu**  
**5-20-11 Jingumae**  
**Shibuya-ku**  
**Tokyo Japan**  
**150-0001**

# MIYAVIE Phone Stand

For Maison Koichiro Kimura  
Fall 2019



This iPhone stand designs are part of MIYAVIE by Maison Koichiro Kimura's foray into smaller homegoods designs. The designs focus on showcasing the elegance of the MIYAVIE material while prioritizing functionality with the ability to charge your phone with use. Koichiro wanted me to create a series of eye-catching designs that would stand out from conventional phone stands. I chose to focus on only using MIYAVIE in its construction in order to make them unique. The design supports both portrait and landscape phone use, placing an emphasis on functionality.

# Hell's Weapons Sculptures

For ITEM IDEM Studio  
Summer 2017

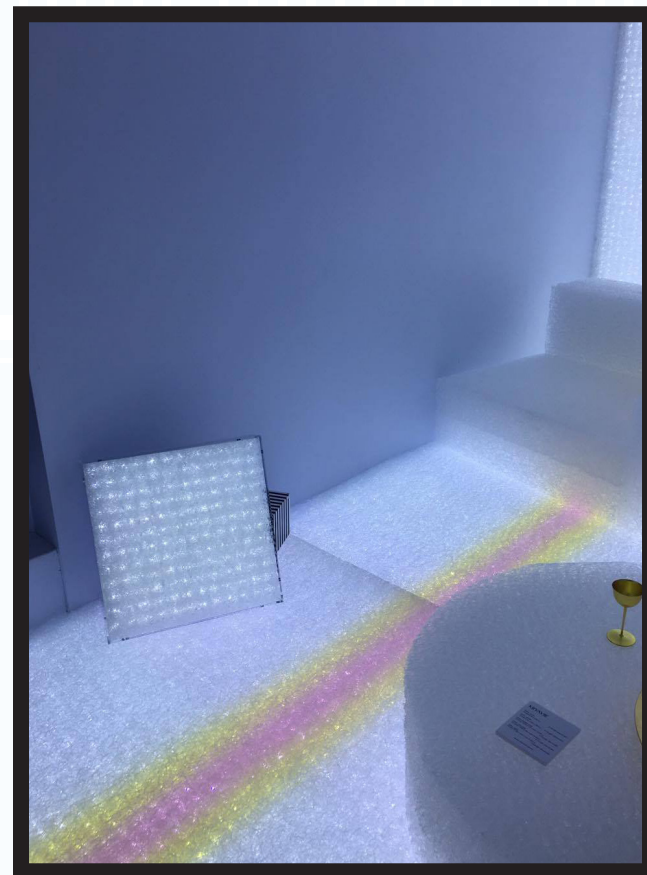
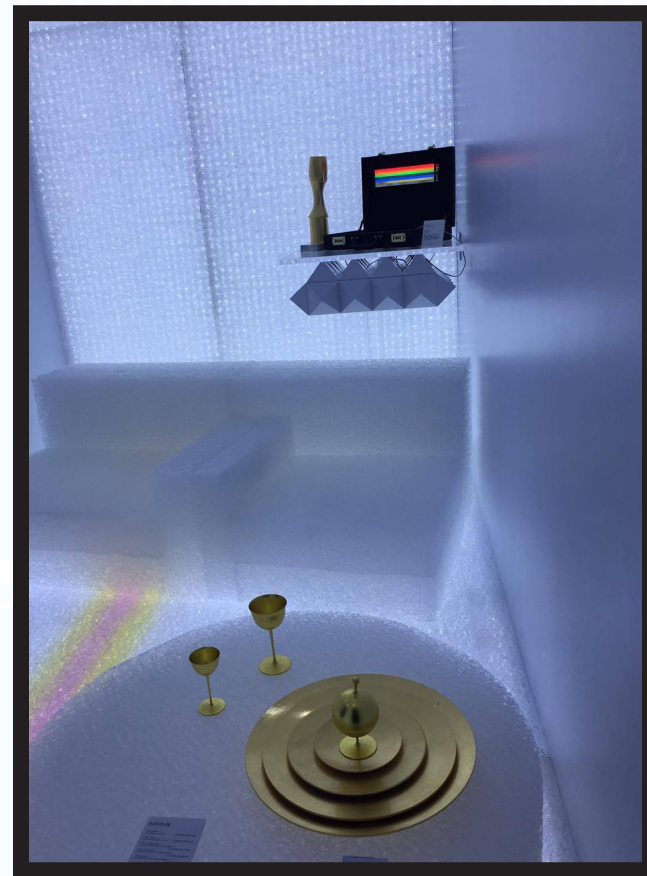
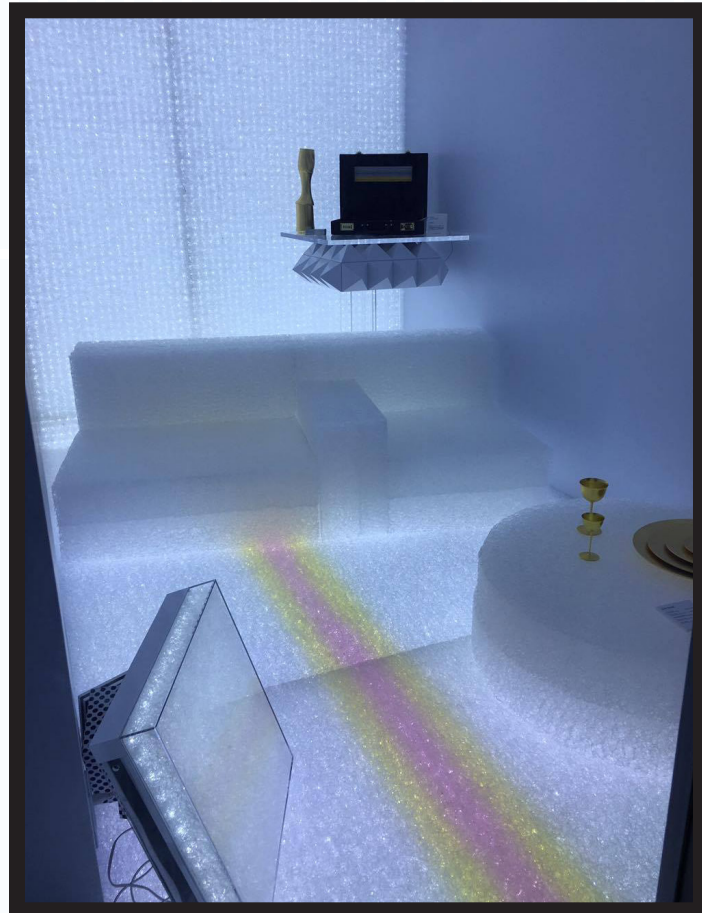


One of the central focuses of ITEM IDEM studio is a fascination with Chinese paper objects used in funerals. In order to best present two incredibly rare paper objects, the submachine gun and the macbook, I decided that the best way to do so would be by encasing them in acrylic and silicone. I constructed both of these pieces, using the silicone in different ways for each of the pieces. Both of the pieces were created and used for a Bryan-Oldman-shot feature in issue 14 of Elsewhere Magazine.



# Tycho Koll x MIYAVIE Pop-Up Store Design

For Maison Koichiro Kimura  
July 20-27th, 2016



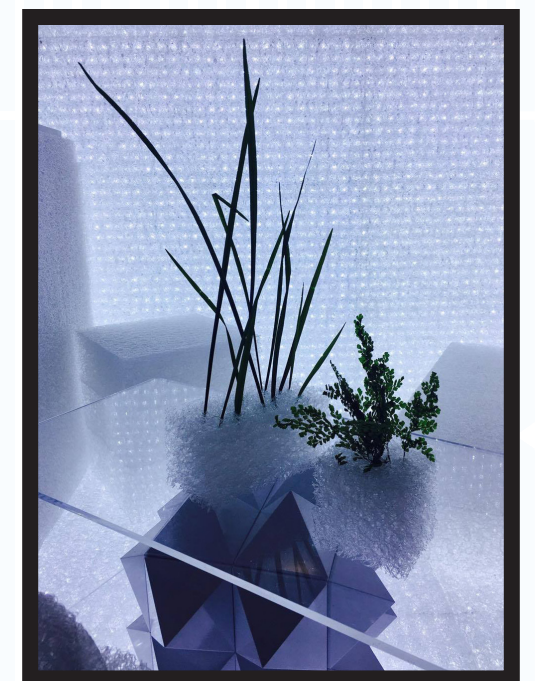
After working with Koichiro Kimura for some time, he invited me to run my own one-week long Pop-Up Store design featuring some of my original concept designs. The color LED's that run down the floor mark the first time that color was used in MIYAVIE lighting, which has become a staple in MIYAVIE's latest product offerings. The two-seater sofa features a new armrest design that I created, and the light panel on the floor was one of my designs that Koichiro ended up creating as a one-off display piece for the duration of the store.

# NATURE x POLYETHYLENE Exhibition at MAISON&OBJET

For Maison Koichiro Kimura  
Spring 2017



Maison Koichiro Kimura's second MIYAVIE exhibition at MAISON&OBJET in Paris required a new concept, as we had debuted MIYAVIE the previous year. After lots of discussion, we decided that the stand should showcase the futuristic beauty of MIYAVIE with that of nature. The Hanging Gardens-esque design features some of my early prototypes of MIYAVIE OASIS, a vase-like product that allows for flower arrangement, as well as LED panels I helped design. This concept eventually led to the production of MIYAVIE OASIS.



# MIYAVIE x ISSEY MIYAKE Display for Tokyo Midtown

For Maison Koichiro Kimura  
Fall 2017

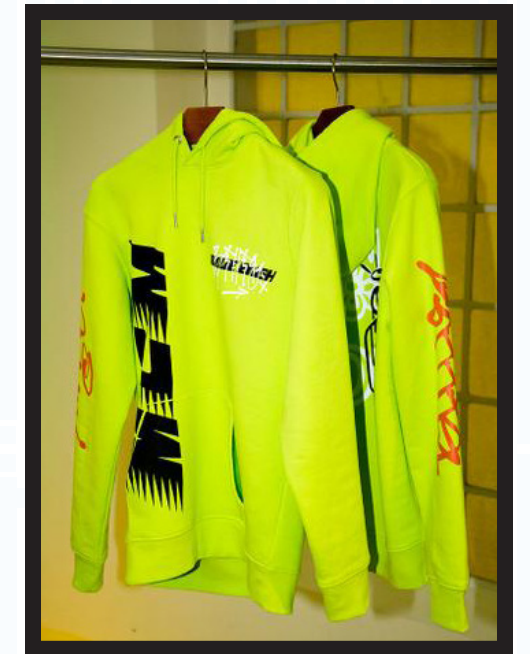


For this collaborative display between Maison Koichiro Kimura and ISSEY MIYAKE, Koichiro was concerned with how to create MIYAVIE into a more sculptural form. The wavy construction of the sculpture is based off of my concept design for a hanging chandelier, and achieves his goal of turning the normally geometric and rigid MIYAVIE material into The display also uses a much larger version of one of my LED MIYAVIE light concepts.



# MCM x Billie Eilish Pop-Up Store Design

For MCM  
Summer 2019

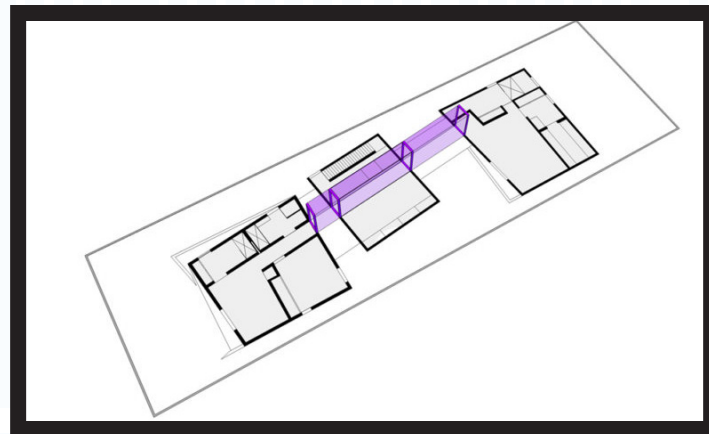
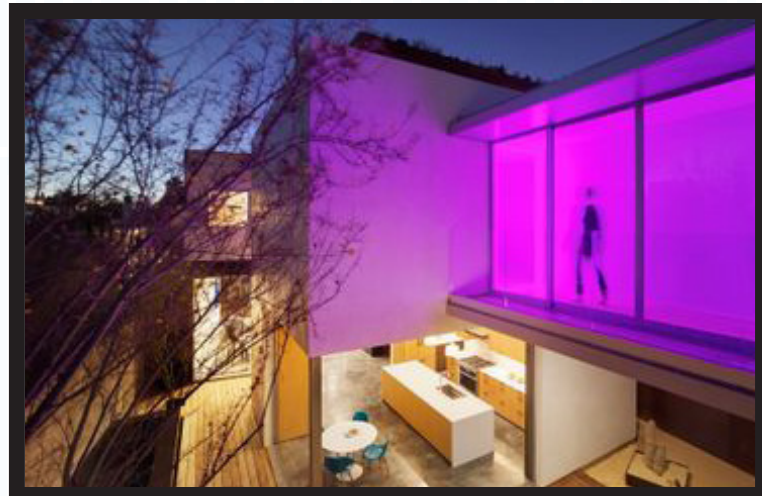


During my time at MCM I helped to create the MCM x Billie Eilish pop-up activation at the MCM Torstraße shop in Berlin. I contributed to the design of the store facade, apparel, and graphic assets used throughout the shop.

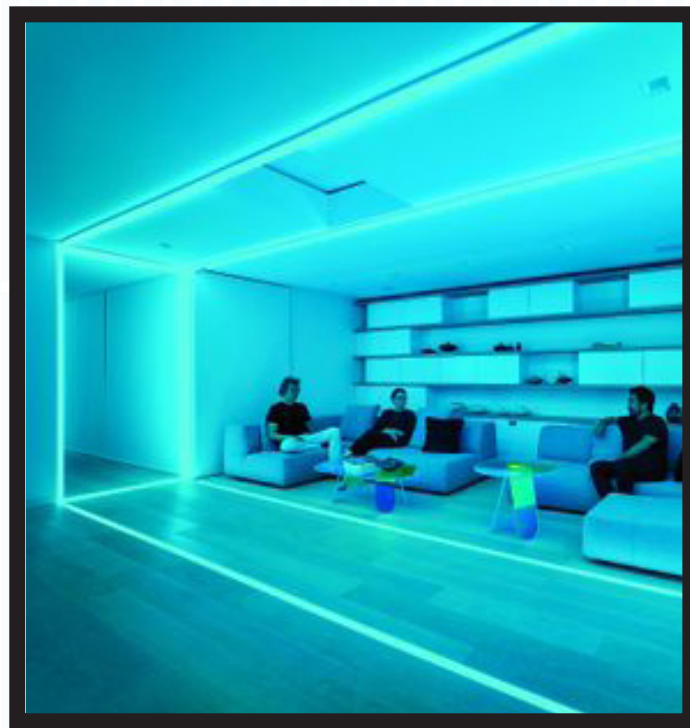


# Spectral Bridge House

For Johannes Girardoni/EYRC Architects  
Spring 2019

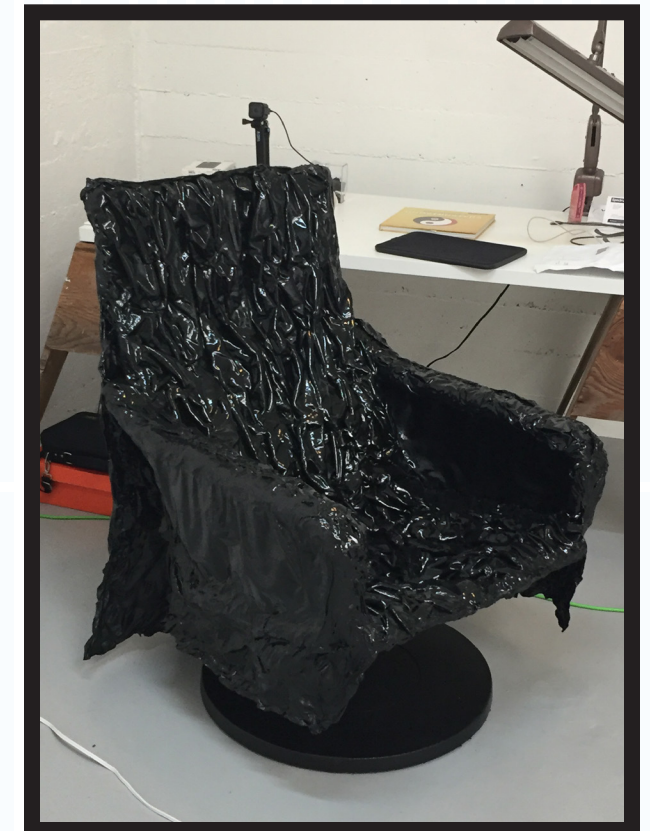


This house in Venice, CA was a created collaboration between Johannes Girardoni and EYRC Architects. The house's central feature is the glass "Spectral Bridge" that runs throughout its 3 main structures. I worked with Johannes to help create the resin fixtures, LED panels, and also helped with the construction of the house. The house ended up being on the cover of LA Times' Design LA magazine and won Art Omi's Francis J. Greenburger Award.



# Darth Vader Chair

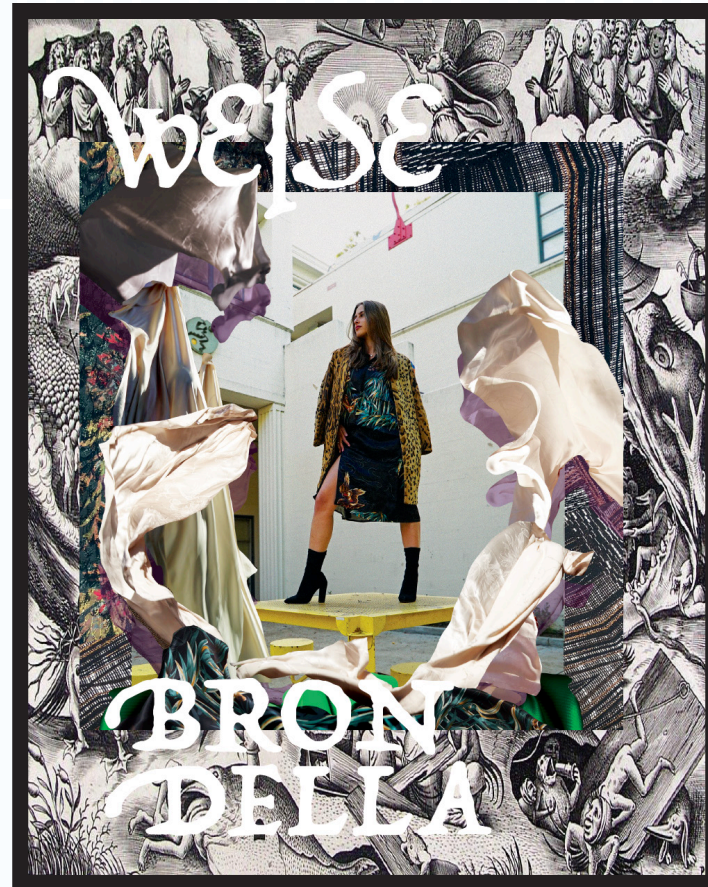
For ITEM IDEM Studio  
Summer 2017



This chair were designed as one of ITEM IDEM's first forays into furniture design. Sparked by the idea of using solely garbage bags as upholstery, we used existing lounge chair frames to stretch + melt garbage bags across. The layers of garbage bag are then coated in a layer of Line-X truck bed sealer, making it functional. I designed how the chair looked in the end, and built them in the studio.

# Various Publications

For Pinky Ring Publishing & Aaron Rose + Gaby Basora



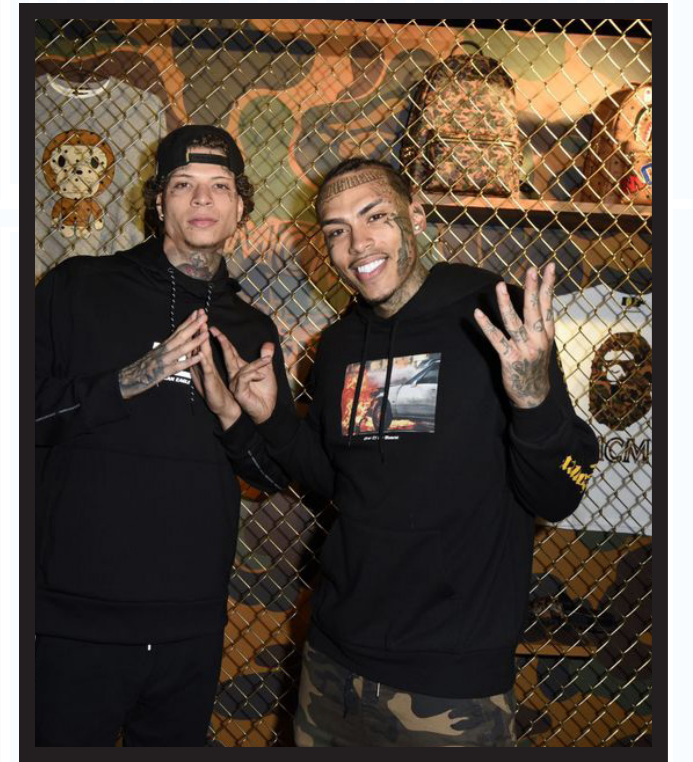
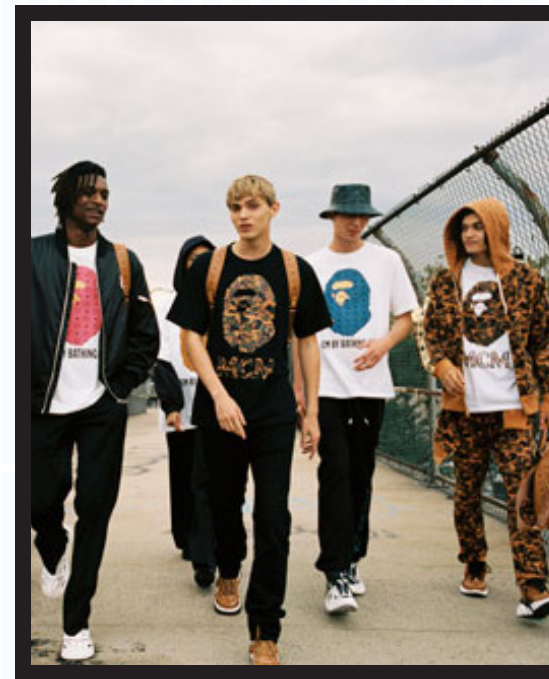
Making small books and zines is another one of my hobbies that I do in my spare time. Through learning how to make books, I've been able to help other people make their own. Some books (Hot snacks + the flamin' hot guide) were made for my publishing company, Pinky Ring Publishing, and others were made as magazine prototypes for Aaron Rose and Gaby Basora's fashion label Weise Brondella.



# MCM x BAPE

For MCM Summer 2019

For MCM's summer collaboration with A Bathing Ape, I assisted in creating the launch campaign as well as the collection's launch party in Los Angeles. I was involved on the research side of the campaign, finding talent to model the collection. For the launch party I helped design several of the assets used in the party space, like DJ booth,



# WEISE BRONDELLA Editorial Concept

For Aaron Rose + Gaby Basora



This editorial concept was driven by Weise Brondella's sourcing of deadstock fabric from high-end factories used by luxury houses. Because there is only a limited amount of each fabric left in the world, I created an editorial that centered around an emphasis on the fabrics themselves. The campaign directive was to evoke a dream, so I wanted to show how the fabric might show up in my own dreams.

# Silver Scary Face Ring

For Me



This is a 100% sterling silver ring that I modeled in Maya. The pointy nose serves as a way for people to protect themselves in the street, and also as a letter opener/boxcutter. The mouth can function as a bottle opener as well.